

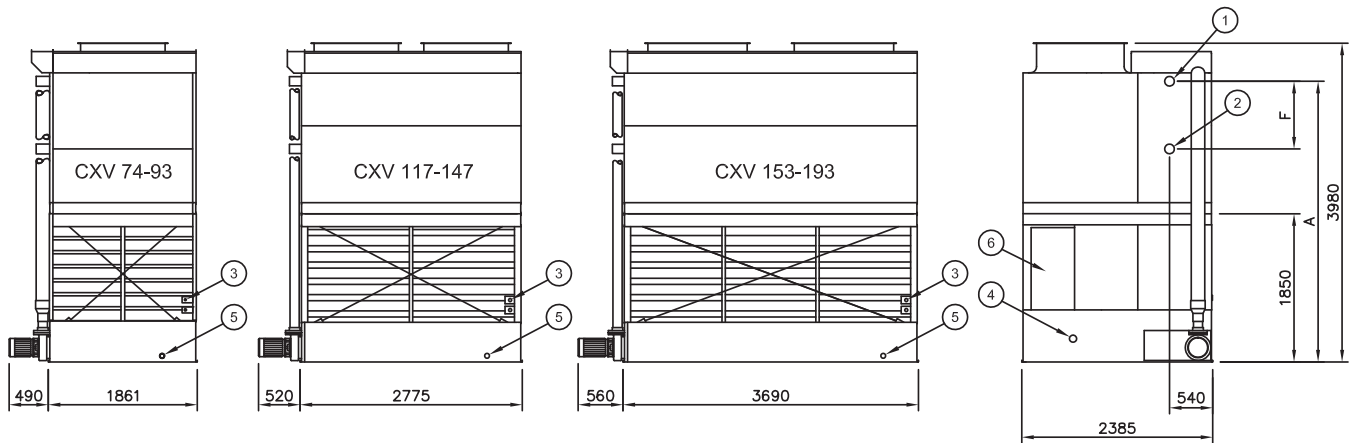


TECHNICAL DATA



CXV Evaporative Condenser

Technical Data



1. Refrigerant in ND 100, 2. Refrigerant out ND 100, 3. Make-up ND 15, 4. Overflow ND 80, 5. Drain ND 50, 6. Access



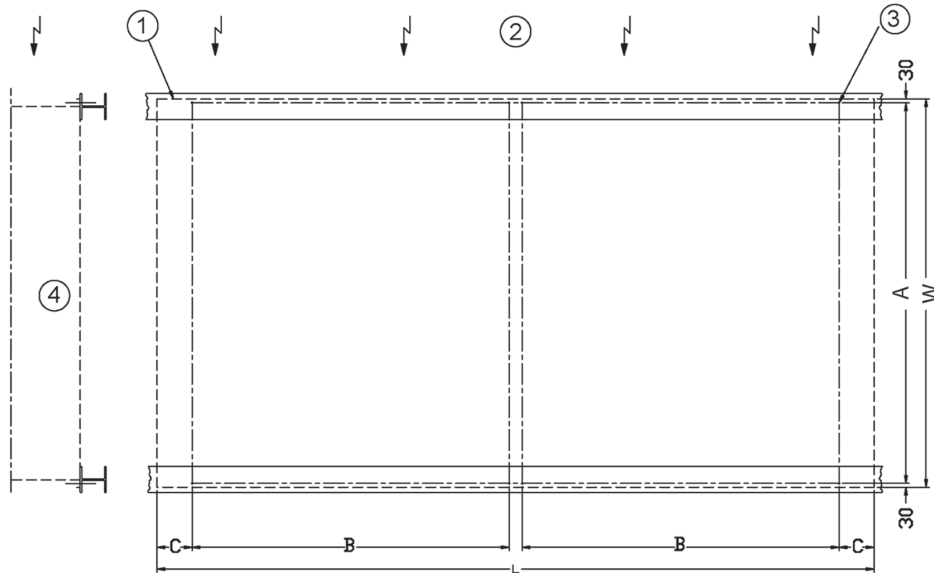
Do not use for construction. Refer to factory certified dimensions. In the interest of product improvement, specifications and dimensions are subject to change without notice.

Model Number CXV	Base Heat Rejection (kW)	Weight			Air Flow (m ³ /s)	Fan Motor (kW)	Spray Water Flow (l/s)	Pump Motor (kW)	R-717 Charge (kg)	Remote Sump		F (mm)
		Shipping (kg)	Operating (kg)	Heaviest Section (Coil) (kg)						Drain Size (mm)	Operating Weight (kg)	
CXV 74	319	2350	3400	1440	12.5	4.0	12	1.1	30	150	3270	845
CXV 80	345	2370	3410	1450	14.3	5.5	12	1.1	30	150	3280	845
CXV 84	362	2370	3420	1450	15.7	7.5	12	1.1	30	150	3290	845
CXV 89	383	2520	3590	1600	13.9	5.5	12	1.1	38	150	3460	1080
CXV 93	401	2530	3600	1610	15.3	7.5	12	1.1	38	150	3470	1080
CXV 117	505	3370	4980	2140	20.0	5.5	18	1.5	46	150	4830	845
CXV 123	530	3390	4980	2140	22.0	7.5	18	1.5	46	150	4840	845
CXV 131	564	3410	5000	2160	25.1	11.0	18	1.5	46	150	4860	845
CXV 137	589	3610	5240	2360	21.4	7.5	18	1.5	57	150	5090	1080
CXV 147	632	3640	5260	2390	24.5	11.0	18	1.5	57	150	5110	1080
CXV 153	661	4150	6290	2590	25.6	7.5	31.5	2.2	61	200	6030	845
CXV 164	706	4180	6310	2610	29.2	11.0	31.5	2.2	61	200	6060	845
CXV 173	744	4190	6320	2620	32.1	15.0	31.5	2.2	61	200	6070	845
CXV 184	795	4480	6650	2910	28.6	11.0	31.5	2.2	76	200	6400	1080
CXV 193	832	4490	6660	2920	31.4	15.0	31.5	2.2	76	200	6410	1080

**NOTES:****APPLICABLE ON ALL MODELS**

1. The standard right hand arrangement as shown has the air inlet side on the right when facing the connection end. Left hand can be furnished by special order. Pump and refrigerant connections are always located on the same end of the unit.
2. Standard refrigerant in-and outlet connection sizes are ND100, beveled for welding for all CXV models. Other connection sizes are available on special order.
3. Fan motor sizes shown in the table are for 0 mm external static pressure (ESP).
4. Refrigerant charge listed is R717 operating charge. To determine operating charge for R22, multiply charge by 1.93 and for R134A by 1.98.
5. Operating weight shown in the tables is based on total unit weight, weight of refrigerant operating charge and basin filled to overflow level.

Structural Support



Model Number CXV	Max. Deflection (mm) (4)	Dimensions (mm)					No. of 16 mm Anchor bolts
		W	L	A	B	C	
74 - 93	5	2385	1860	2325	-	255	4
117 - 147	8	2385	2775	2325	-	255	4
153 - 193	10	2385	3690	2325	-	255	4
207 - 296	10	2985	3690	2925	-	255	4
283 - 327	10	3610	3690	3550	-	255	4
338 - 435	12	2985	5520	2925	2440	270	8
416 - 481	12	3610	5520	3550	2440	270	8



NOTES:

- Support beams and anchor bolts to be selected and installed by others.
- All support steel must be level at the top.
- Beams must be selected in accordance with accepted structural practice.
- Maximum deflection is for units with water level in pan at overflow.
- Consult your BAC representative for the weight loading diagram before selecting support beams.



CXV Questions?

VISIT WWW.BALTIMOREAIRCOIL.COM.AU:

OR CALL 1300 134 662 (AUSTRALIA)
0800 225 842 (NEW ZEALAND)



**BALTIMORE
AIRCOIL AUSTRALIA**

COOLING TOWERS

CLOSED CIRCUIT COOLING TOWERS

ICE THERMAL STORAGE

EVAPORATIVE CONDENSERS

HYBRID PRODUCTS

PARTS & SERVICES

www.BaltimoreAircoil.com.au

120 Wisemans Ferry Road, Somersby NSW 2250 > Telephone (Australia): 1300.134.622 > Telephone (New Zealand): 0800.225.842